

  
**PROMINENCE**  
ESTATES



**RESIDENTIAL**  
PROPERTY EXPERTS

COVENTRY, WARWICKSHIRE  
& LEAMINGTON SPA

**HENRIETTA STREET,**  
FOLESHILL, COVENTRY, CV6 5EF

**£950 PCM**

HENRIETTA STREET



  
**PROMINENCE**  
— ESTATES —

A well-presented two bedroom mid-terrace house, offered part furnished and including white goods, ideal for a working professional couple or small family.

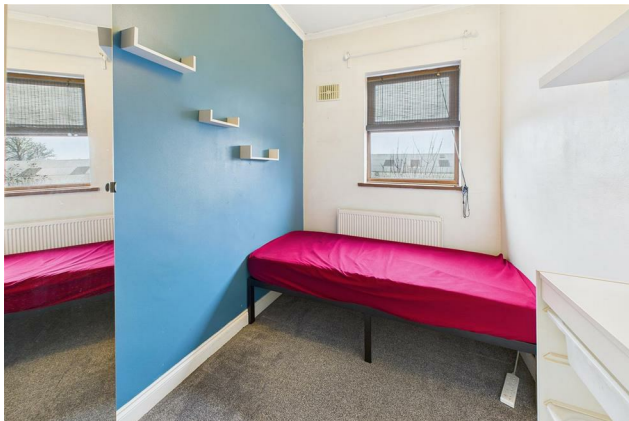
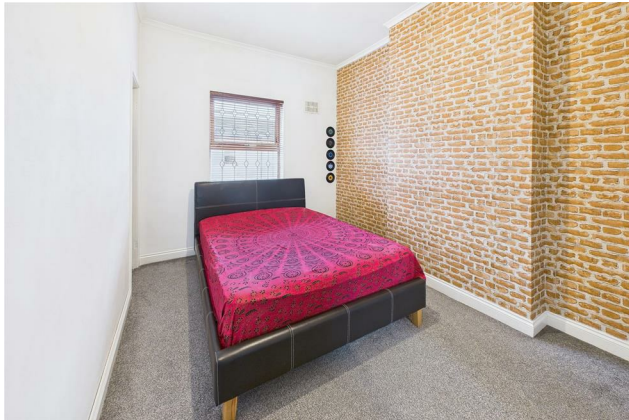
The property comprises a spacious living room leading through to a lovely conservatory, providing additional living space with views over the rear garden. The fitted kitchen is well equipped with white goods and offers ample storage and worktop space. The modern bathroom is finished to a high standard and features a large walk-in shower. To the first floor are two well-proportioned bedrooms, both benefiting from good natural light.

Externally, the property benefits from a rear garden with lawn area, ideal for relaxing or entertaining. On-street parking is available to the front of the property.

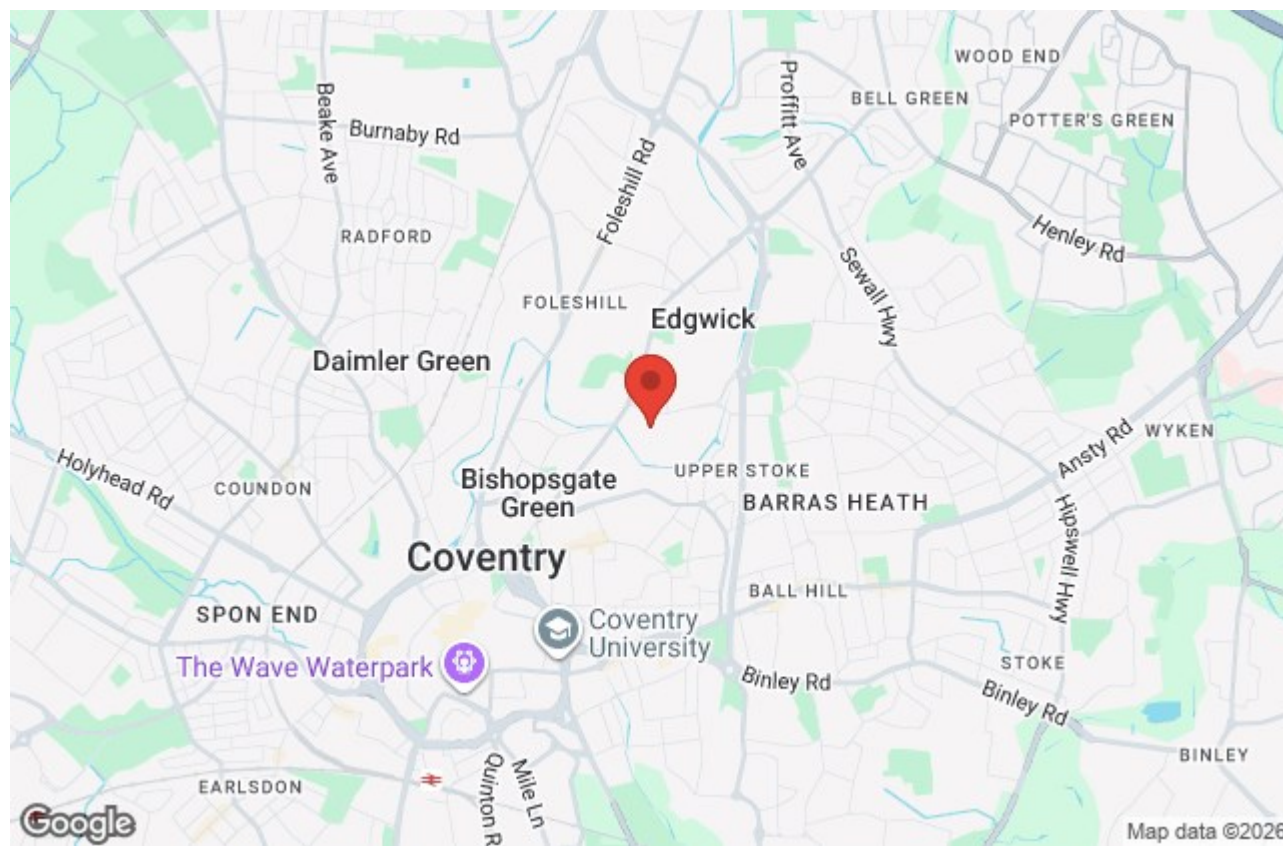
The property is conveniently located close to a range of local shops and amenities, including convenience stores and everyday services, with larger shopping facilities and the city centre easily accessible. There are also several local primary schools nearby, including Broad Heath Community Primary School, Stanton Bridge Primary School and Joseph Cash Primary School.

Available now

Early viewing is highly recommended.







Prominence Estates  
5 Queen Isabels Avenue,  
Cheylesmore,  
Coventry,  
CV3 5GE

02476 309 826  
[lettings@prominenceestates.com](mailto:lettings@prominenceestates.com)  
[www.prominenceestates.com](http://www.prominenceestates.com)

  
**PROMINENCE**  
— ESTATES —